

ANNUAL REPORT 1997

JANUARY 31, 1997





County of Jefferson

Board of Elections

County Building, 175 Arsenal Street
Watertown, NY 13601-2543

Telephone: (315) 785-3027, 3028 or 3325

Commissioner
Farrell
Deputy Commissioner
Corey

Democratic
Peg
Deputy
Cin

JANUARY 31, 1998

JEFFERSON COUNTY BOARD OF LEGISLATORS

1997 ANNUAL REPORT

JEFFERSON COUNTY BOARD OF ELECTIONS RESPECTFULLY SUBMITS ITS ANNUAL REPORT FOR YOUR INSPECTION.

WE HOPE THAT THIS REPORT WILL KEEP YOU UPDATED ON THE OPERATIONS OF THE BOARD OF ELECTIONS.

WILLIAM L. ZECCOLO
COMMISSIONER

HELEN G. FARRELL
COMMISSIONER

WILLIAM S. CORBETT
DEPUTY COMMISSIONER

SANDRA L. COREY
DEPUTY COMMISSIONER

NEW YORK STATE BOARD OF ELECTIONS

LES OF CONTENTS

RODUCTION
OBJECTIVES AND PERFORMANCE
DEPARTMENTAL DESCRIPTION
TYPES OF SERVICES AND ASSISTANCE
ORGANIZATIONAL CHART
BUDGET
VOTER REGISTRATION
ORIGIN OF VOTER REGISTRATION FOR 1997
VOTER ENROLLMENT 1997
VOTER REGISTRATION
VOTER TURNOUT
VOTER OUTREACH
COUNTER BOX PROGRAM
HIGH SCHOOL VOTER REGISTRATION
LOCAL REALTORS'
SENIOR CITIZENS
ELECTION INSPECTORS
WAGES
TRAINING
RECRUITMENT
STUDENT PILOT PROGRAM
ELECTION 1997
PETITIONS
ABSENTEE BALLOTS
AFFIDAVIT BALLOTS
COURT ORDERS
CAMPAIGN FINANCE
VOTING MACHINES AND POLLING PLACES
ELECTION NIGHT
NEWS MEDIA
SUMMARY

RODUCTION

JEFFERSON COUNTY BOARD OF ELECTIONS CONDUCTS ALL NATIONAL, STATE, COUNTY, TOWN, AND SOME VILLAGE ELECTIONS. ALTHOUGH THE BOARD OF ELECTIONS IS A COUNTY AGENCY, ITS STRUCTURE, RESPONSIBILITIES AND DUTIES ARE MANDATED BY NEW YORK STATE ELECTION LAW, WHILE ITS ADMINISTRATIVE PROCEDURES, POLICIES, GUIDELINES, RULES AND REGULATIONS ARE DEFINED BY THE NEW YORK STATE BOARD OF ELECTIONS.

OBJECTIVES AND PERFORMANCE

THE BOARD PROVIDES FOR THE REGISTRATION OF VOTERS WITHIN JEFFERSON COUNTY, AND CONDUCTS ELECTIONS AS REQUIRED BY FEDERAL AND STATE LAW. THE BOARD'S ANNUAL PERFORMANCE IS FULLY MANDATED BY FEDERAL AND STATE LAW.

DEPARTMENTAL DESCRIPTION

THE BOARD HAS A FULL-TIME STAFF OF FOUR EMPLOYEES WITH EQUAL REPRESENTATION OF DEMOCRATS AND REPUBLICANS AS MANDATED BY NEW YORK STATE ELECTION LAW. THE BOARD IS ADMINISTERED BY TWO PART-TIME DEPUTY COMMISSIONERS WHO SERVE A TWO-YEAR TERM. THE COMMISSIONERS ARE ELECTED BY THE COUNTY COMMITTEE OF EACH POLITICAL PARTY AND THEIR APPOINTMENTS ARE CONFIRMED BY THE COUNTY BOARD OF LEGISLATORS. THE COMMISSIONERS EACH HAVE A DEPUTY WHO WORKS FULL-TIME IN THE BOARD OFFICE AND RUNS THE DAILY OPERATIONS OF THE OFFICE. THE DEPUTY COMMISSIONERS ARE ASSISTED BY SEVERAL PART-TIME REGISTRATION CLERKS AND TWO PART-TIME EMPLOYEES WHO WORK SEASONALLY APPROXIMATELY THREE TO FIVE MONTHS OF THE YEAR.

THE STAFF OF THE COUNTY BOARD OF ELECTIONS PROVIDES THE TECHNICAL, CLERICAL AND MECHANICAL SKILLS NECESSARY TO PROVIDE SERVICES, INFORMATION AND STATISTICAL DATA TO COUNTY LEGISLATORS, OTHER DEPARTMENTS, GOVERNMENT AGENCIES AND THE PUBLIC.

S OF SERVICES AND ASSISTANCE

TO PROVIDE REGISTRATION FORMS AND ASSISTANCE TO THOSE PERSONS WISHING TO REGISTER

TO PROVIDE TRAINING OF ELECTION INSPECTORS IN PROCEDURES USED IN ELECTIONS

TO PROVIDE TRAINING OF MACHINE CUSTODIANS IN PROCEDURES OF THE SET UP AND REPAIR OF VOTING MACHINES

TO PROVIDE ASSISTANCE TO TOWN AND VILLAGE CLERKS, SCHOOL DISTRICTS AND FIRE DISTRICTS RELATIVE TO THEIR ELECTIONS

TO PROVIDE A DIRECTORY OF ELECTED OFFICIALS IN JEFFERSON COUNTY

TO PROVIDE EDUCATIONAL BACKGROUND ON THE PROCEDURES OF REGISTERING TO VOTE AND VOTING TO THE SCHOOLS AND ORGANIZATIONS

TO PROVIDE LISTS OF REGISTERED VOTERS AND STATISTICAL DATA ON REGISTRATION, ENROLLMENT AND VOTING

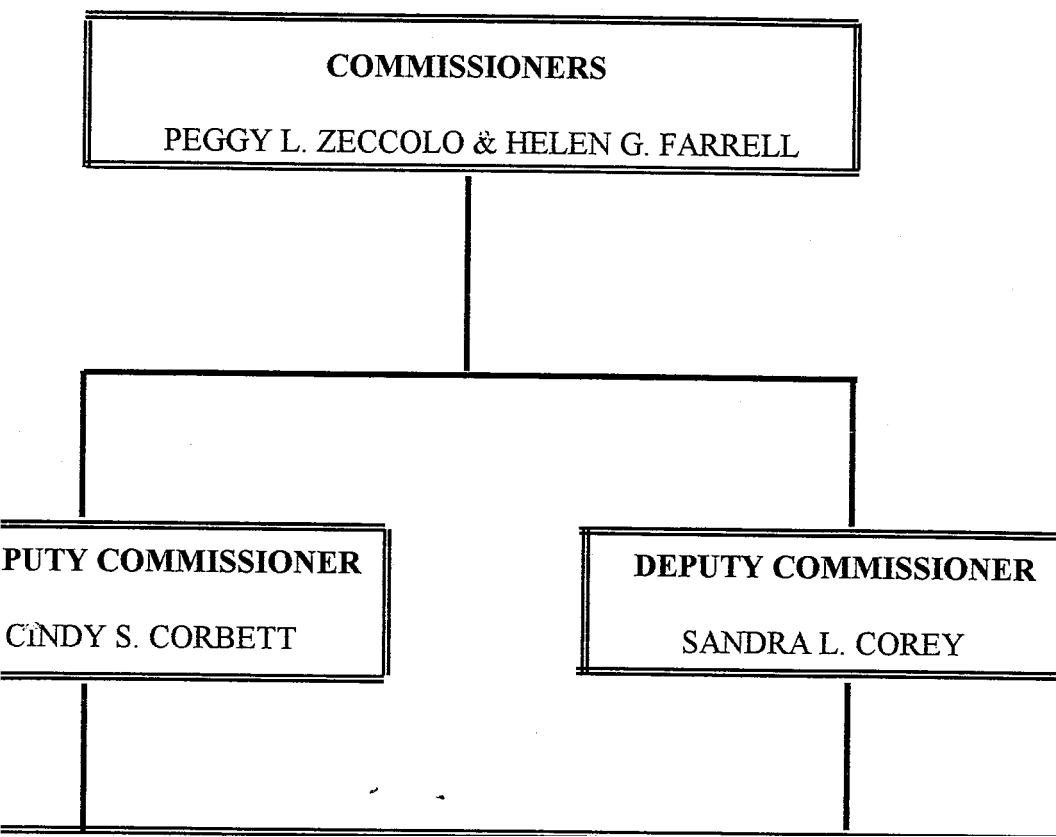
TO ASSIST OTHER COUNTY AND STATE DEPARTMENTS

TO PROVIDE ASSISTANCE TO CANDIDATES AND POTENTIAL CANDIDATES

TO AID POLITICAL PARTIES WITH PROCEDURES OF THE ELECTION LAW

ANIZATIONAL CHART

JEFFERSON COUNTY BOARD OF ELECTIONS



GET

TOTAL 1997 BUDGET FOR THE JEFFERSON COUNTY BOARD OF ELECTIONS WAS \$1,077,000, ALLOCATED TO THE FOLLOWING:

PERSONNEL COSTS AND BENEFITS

OFFICE EXPENSES

TELEPHONE

POSTAGE

PRINTING

COMPUTER SOFTWARE

TRAVEL AND EDUCATION

ADVERTISING

CONTRACTUAL EXPENSES

EFFORT TO PROVIDE THE BOARD OF ELECTIONS WITH GREATER AUTONOMY IN MANAGING ACTUAL EXPENDITURES WITHIN OUR BUDGET, THE BOARD OF LEGISLATORS RESTRUCTURED OUR DEPARTMENT IN A BUDGET PROGRAM WHICH CONSOLIDATES THE ACTUAL LINE ITEMS. WE HAVE FOUND THIS PROGRAM TO BE EFFICIENT AND COST-EFFECTIVE.

ER REGISTRATION

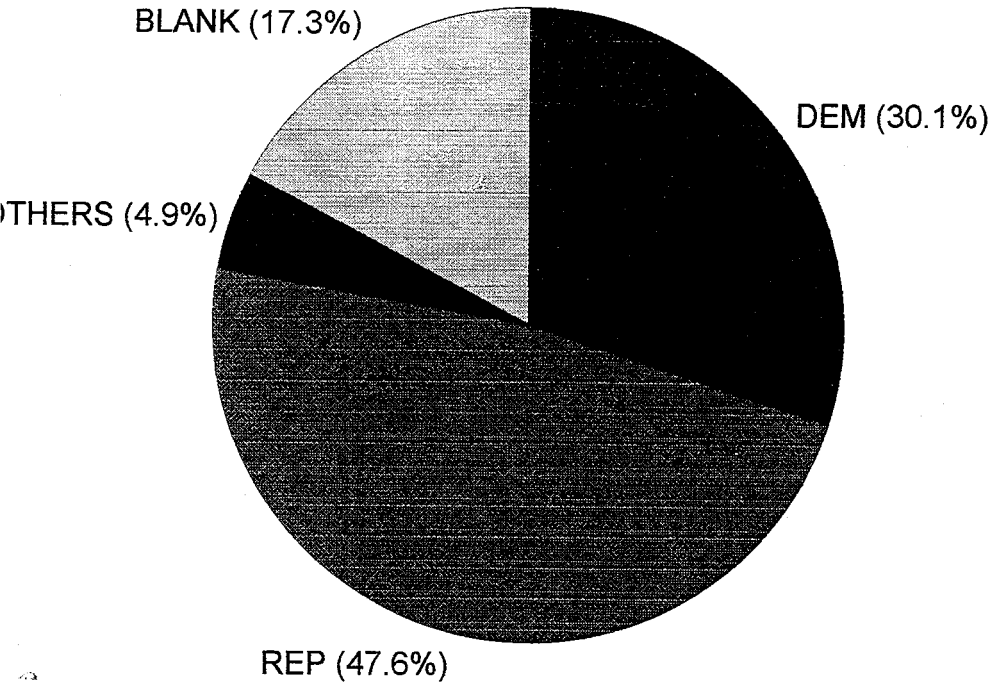
1997, JEFFERSON COUNTY HAD 52,544 REGISTERED VOTERS WHO WERE ELIGIBLE TO CAST BALLOTS IN THE NOVEMBER GENERAL ELECTION. IN AUGUST VOTERS WHO HAD NOT RECEIVED CORRESPONDENCE FROM US IN THE PREVIOUS YEAR RECEIVED THE MANDATED VERIFICATION NOTICES. CONFIRMATION NOTICES WERE SENT TO VOTERS WHOSE VERIFICATION NOTICES WERE RETURNED.

DURING THE YEAR, 914 ENROLLMENT CHANGES WERE PROCESSED. THE CHANGES WILL BE EFFECTIVE FOR THE 1998 PRIMARY.

IN OF VOTER REGISTRATIONS FOR 1997

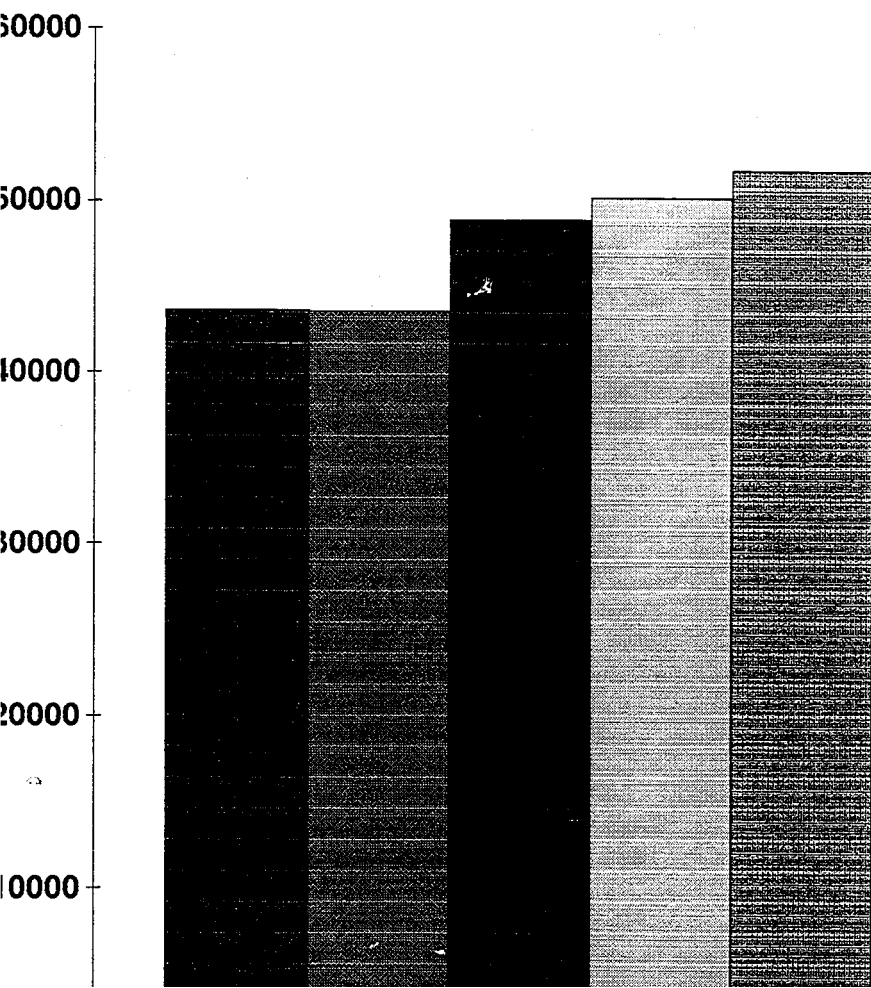
MAIL.....	1,521
DMV.....	2,684
AGENCY.....	2,443
CARD CHECK.....	21
IN HOUSE.....	126
COUNTY OUTREACH.....	212
INCOME TAX.....	84
SCHOOLS.....	369
CANDIDATES AND GROUPS.....	58

R ENROLLMENT 1997



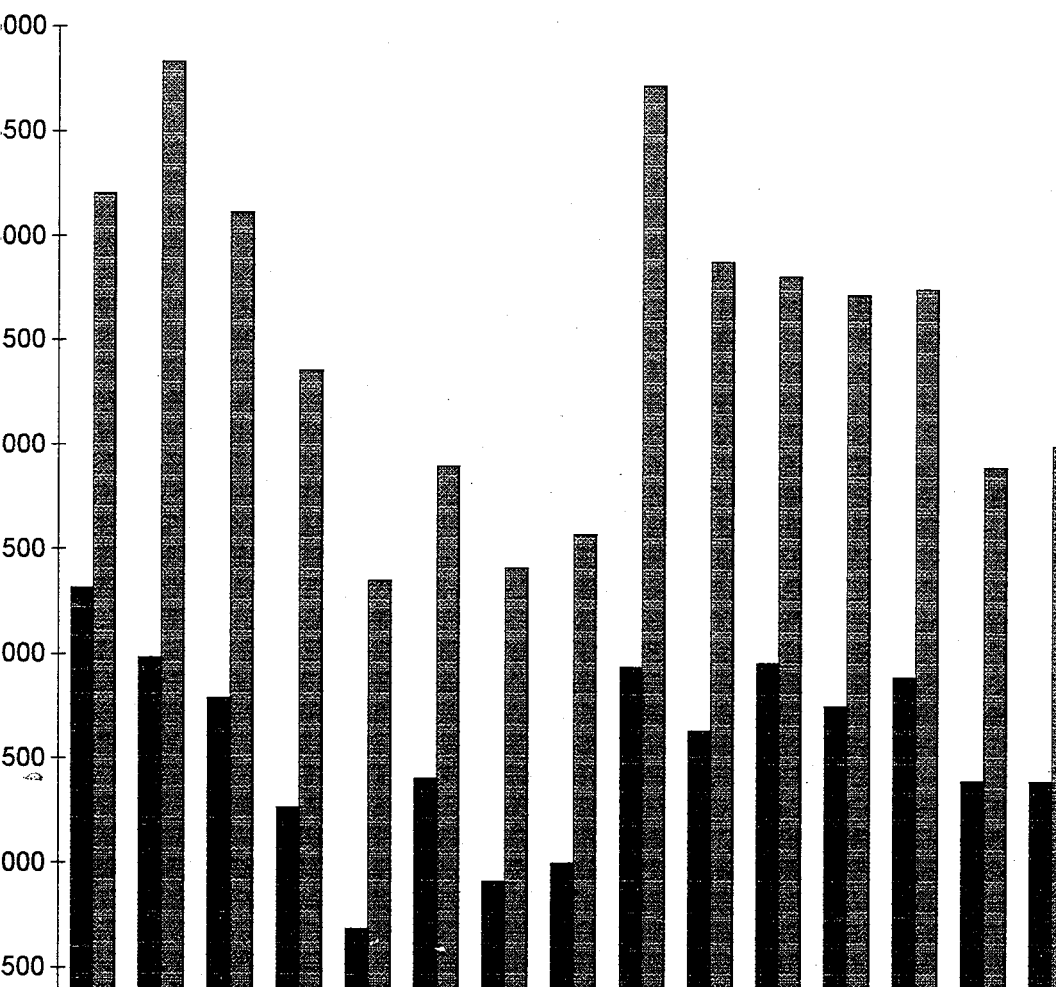
ER REGISTRATION

REGISTRATIONS 1993 TO 1997



VOTER TURNOUT

VOTER TURNOUT 1997



ER OUTREACH

COUNTER BOX PROGRAM

DURING 1997, THE BOARD OF ELECTIONS HAD 75 SITES IN JEFFERSON COUNTY DISPLAYING COUNTER BOXES CONTAINING REGISTRATION FORMS. COUNTER BOXES ARE ON DISPLAY IN BANKS AND POST OFFICES. THE FORMS ARE RESTOCKED ON A REGULAR BASIS BY THE BOARD PERSONNEL. THE BOARD IS CONTINUALLY LOOKING FOR NEW SITES.

SCHOOL VOTER REGISTRATION

DURING THE MONTHS OF FEBRUARY AND MARCH OF 1997, THE BOARD'S FULL-TIME REGISTRATION CLERKS VISITED SCHOOLS AND REGISTERED HIGH SCHOOL STUDENTS. THE BOARD OF ELECTIONS OFFERS TO GIVE PRESENTATIONS TO GOVERNMENT CLASSES DURING THEIR VISITS. THERE ARE TWELVE HIGH SCHOOLS IN JEFFERSON COUNTY AND NINE OF THESE SCHOOLS ALLOWED OUR PERSONNEL TO COME INTO THEIR SCHOOL AND REGISTER STUDENTS THIS YEAR. THE SCHOOLS AND OUR OFFICE WERE VERY PLEASED WITH THE OUTCOME OF OUR VISITS. IN 1997, 294 STUDENTS WERE REGISTERED.

LOCAL REALTORS

A SUPPLY OF REGISTRATION FORMS IS SENT TO THE OFFICES OF EACH MEMBER OF THE LOCAL REALTORS ASSOCIATION. WE ASK THEM TO INCLUDE REGISTRATION FORMS IN THE PACKETS THAT THEY DISTRIBUTE TO THEIR CUSTOMERS. THE BOARD OF ELECTIONS CALLS PERIODICALLY DURING THE YEAR, TO SEE IF MORE FORMS ARE NEEDED.

FOR CITIZENS

ON REQUEST, THE STAFF OF THE BOARD OF ELECTIONS VISITS LOCAL NURSING HOMES TO REGISTER VOTERS. THE STAFF ALSO ASSISTS NEWLY REGISTERED VOTERS IN FILLING OUT ABSENTEE APPLICATIONS FOR THOSE WHO ARE CONFINED. A SUPPLY OF FORMS AND APPLICATIONS ARE LEFT WITH SOCIAL WORKERS AT THE FACILITIES FOR NEW RESIDENTS.

ELECTION INSPECTORS

ELECTION LAW MANDATES FOUR INSPECTORS, REPRESENTATIVE OF THE DEMOCRATIC AND REPUBLICAN PARTY, IN EACH DISTRICT AND REQUIRES INSPECTORS TO BE TRAINED AND TESTED WHEN THEY ARE APPOINTED AND EVERY THREE YEARS THEREAFTER. INSPECTOR RECORDS ARE STORED IN A COMPUTERIZED DATABASE THEREBY INSURING THAT ACCURATE LISTS, WITH REQUIRED INFORMATION ARE FORWARDED TO TOWN AND CITY CLERKS IN A TIMELY FASHION SO INSPECTORS CAN RECEIVE PROMPT PAYMENT FOR SCHOOL ATTENDANCE AS WELL AS PRIMARY AND ELECTION DAY SERVICE.

PAY RATES

THE HOURLY PAY RANGE FOR INSPECTORS IS ESTABLISHED BY THE INDIVIDUAL MUNICIPALITY, AND VARIES THROUGHOUT THE COUNTY, FROM \$8.50 AN HOUR TO \$5.50. THE AVERAGE PAY IS APPROXIMATELY \$6.00 PER HOUR. MOST TOWNS PAY MILEAGE FOR THE RETURN OF SUPPLIES AND ATTENDING SCHOOL.

TRAINING

IN 1997, INSPECTOR TRAINING SCHOOL WAS HELD AT THE NORTHSIDE IMPROVEMENT LEAGUE, 633 MILL ST, WATERTOWN, NY. THE TRAINING SESSIONS WERE HELD AUGUST 26-28. TWO 2-HOUR SESSIONS WERE HELD EACH DAY. TRAINING WAS GIVEN BY THE DEPUTY COMMISSIONERS. A TOTAL OF 296 INSPECTORS AND ALTERNATES WERE TRAINED AND TESTED IN 1997.

RECRUITMENT

IN 1997, VOTERS EXPRESSED AN INTEREST IN BECOMING ELECTION INSPECTORS BY CHECKING THE APPROPRIATE BOX ON THEIR REGISTRATION FORM OR BY PHONE IN RESPONSE TO THE AUGUST CARD CHECK. ADDITIONAL EFFORTS AS THE FOLLOWING PILOT PROGRAM HAVE BEEN NEEDED, BECAUSE

OT PROGRAM

SCHOOL ELECTION INSPECTORS:

EFFORT TO GIVE YOUNG PEOPLE "HANDS-ON" EXPERIENCE IN THE NG PROCESS, OUR BOARD APPROACHED A HIGH SCHOOL IN THE COUNTY A PROPOSAL. IN EXCHANGE FOR WORKING AS ELECTION INSPECTORS, ENTS WOULD RECEIVE EXTRA CLASS CREDITS, AND WOULD BE PAID BY MUNICIPALITY IN WHICH THEY SERVED. THE SCHOOL WAS HAPPY TO MMODATE US, FOR IR PROVIDED ANOTHER OUTLET FOR THE FACTION OF A STATE EDUCATION REQUIREMENT OF COMMUNITY CE. THE GOVERNMENT TEACHER WAS TOLD THAT THE STUDENTS MUST THE FOLLOWING QUALIFICATIONS:

YEARS OF AGE BY THE PRIMARY ELECTION;
E ENROLLED IN ONE OF THE TWO MAJOR POLITICAL PARTIES;
TEND INSPECTOR SCHOOL IN AUGUST
RELIABLE

IF THEM EXPRESSED INTEREST IN THIS PROJECT. WE MET WITH THE STUDEN OL AND GAVE THEM INSPECTOR'S HANDBOOKS, EXPLAINED THE IMPORTANC G COURTEOUS AND RELIABLE, AND THEY WERE TOLD THAT IF THEY DID NOT ND THE INSPECTOR SCHOOL, THEY WOULD BE DROPPED FROM THE PROGRAM OF THE STUDENTS CARRIED THROUGH, AND THEY WERE EXCEPTIONAL. TH EXPLAINED AT THE DISTRICT, WE CALLED THE CHAIRMAN OF INSPECTORS IN ICT. WE ASKED THE CHAIRMAN TO ALLOW THE STUDENTS TO DO EACH OF T S THAT INSPECTORS NORMALLY PERFORM, AND THE RESULTS WERE GRATIF STUDENT WORKED IN A DISTRICT WITH EXPERIENCED INSPECTORS, AND TH ING BUT PRAISE FOR THEM. WE ARE VERY PLEASED WITH THIS PROGRAM, A TO INVOLVE OUR ORIGINAL SCHOOL AND SECOND ONE IN 1998. THESES YOU E ARE OUR FULL-TIME ELECTION INSPECTORS OF THE FUTURE.

CTION 1997

TIONS

1997, THERE WERE 329 PETITIONS FILED AT THE JEFFERSON COUNTY BOARD OF ELECTIONS. PETITIONS WERE FILED BY DEMOCRAT, REPUBLICAN, CONSERVATIVE, INDEPENDENCE AND RIGHT TO LIFE PARTIES. THERE WERE NO OBJECTIONS FILED AGAINST DESIGNATING PETITIONS, BUT THERE WERE THREE DECLINATIONS. SEVENTEEN NEUTRAL PETITIONS WERE FILED, WITH NO OBJECTIONS. MANY OF THESE ARE FOR A HOMEOWNERS STILL CAUCUS. TWELVE CAUCUS CERTIFICATES WERE ALSO FILED WITH THE CLERK OF COURSE AND RECORDS OFFICE.

WHEN OBJECTIONS ARE FILED, THEY ARE RESEARCHED BY THE DEPUTY CLERK OF COURSE AND RECORDS AND RULED UPON BY THE COMMISSIONERS.

ABSENTEE BALLOTS

FOR THE 1997 GENERAL ELECTION, 1,278 ABSENTEE BALLOTS WERE ISSUED, 1,000 BALLOTS WERE RETURNED AND 94 WERE INVALIDATED FOR THE FOLLOWING REASONS:

- ▶ NO SIGNATURE
- ▶ POSTMARKED TOO LATE
- ▶ VOTED AT THE POLLS
- ▶ BALLOT RETURNED UNDELIVERABLE

ABSENTEE BALLOTS ARE KEPT IN-HOUSE AT THE JEFFERSON COUNTY BOARD OF ELECTIONS. BALLOTS ARE COUNTED DURING THE RECANVASS OF THE MACHINES. IF THERE IS A CLOSE VOTE ON THE MACHINES IN ANY JURISDICTION, THE BALLOTS IN THOSE DISTRICTS WILL BE THE PRIORITY WHEN THE RECANVASS BEGINS. RECANVASSING AND CERTIFICATION OF EACH ELECTION ARE DONE MANUALLY BY THE REGULAR STAFF AT THE CLERK OF COURSE AND RECORDS OFFICE.

PROVISIONAL BALLOTS

PROVISIONAL BALLOTS ARE SENT TO EACH ELECTION DISTRICT TO ACCOMMODATE

THE REASONS FOR BALLOTS NOT BEING CAST ARE AS FOLLOWS:

- ▶ REGISTERED TOO LATE
- ▶ NOT CURRENTLY REGISTERED IN JEFFERSON COUNTY
- ▶ CANCELED
- ▶ NOT PROPERLY ENROLLED (PRIMARY)
- ▶ AFFIDAVIT NOT COMPLETED CORRECTLY

SECTION OF THE NVRA (NATIONAL VOTER REGISTRATION ACT) THAT WAS ENACTED IN 1996 MAKES IT POSSIBLE FOR PEOPLE WHO HAVE MOVED WITHIN A COUNTY AND WHO ARE PRESENTLY REGISTERED TO GO TO THEIR NEW POLLING PLACE AND CHANGE THEIR ADDRESS AND VOTE AN AFFIDAVIT BALLOT.

COURT ORDERS

THERE WERE FOUR COURT ORDERS FOR THE 1997 GENERAL ELECTION, THREE TO REGISTER TO VOTE AND THE FOURTH WAS TO OBTAIN AN ABSENTEE BALLOT.

SECTION DAY COUNTY COURT JUDGE, LEE CLARY, WAS ON DUTY FROM 6:00 A.M. UNTIL 2:00 P.M. AND SURROGATES COURT JUDGE, PETER SCHWERZMAN, WAS ON DUTY FROM 2:00 P.M. UNTIL THE POLLS CLOSED.

CAMPAIGN FINANCE

NEW YORK STATE ELECTION LAW REQUIRES CANDIDATES AND THEIR POLITICAL COMMITTEES TO FILE FINANCIAL DISCLOSURE STATEMENTS AT LEAST THREE TIMES A YEAR WITH THE APPROPRIATE BOARD OF ELECTIONS. FINANCIAL DISCLOSURE REFERS TO CAMPAIGN CONTRIBUTIONS AND EXPENDITURES, NOT PERSONAL INCOME OR PERSONAL EXPENSES.

THE BOARD OFFICE DISTRIBUTES THE NEW YORK STATE GUIDE TO FINANCIAL DISCLOSURE BOOKLETS, ALL NECESSARY FORMS, CONTRIBUTION LIMITATION REQUIREMENTS AND FILING CALENDAR TO ALL CANDIDATES.

FIVE YEARS OF DISCLOSURE RECORDS ARE ON FILE AT THE BOARD OF ELECTIONS OFFICE. AS PUBLIC RECORDS, THEY ARE OPEN TO INSPECTION UPON REQUEST. COPIES MAY BE OBTAINED AT 25 CENTS PER PAGE.

THERE WERE 260 FINANCIAL FILINGS WITH THE JEFFERSON COUNTY BOARD OF ELECTIONS IN 1997.

ACCESSIBLE VOTING MACHINES AND POLLING PLACES

JEFFERSON COUNTY HAD 61 POLLING SITES IN 1997. ALL OF THE POLLING SITES WERE ACCESSIBLE TO THE DISABLED.

WE HAVE 101 VOTING MACHINES OWNED BY THE TOWNSHIP OR CITY WHERE THEY ARE LOCATED. THE BOARD ALSO OWNS TWO VOTING MACHINES WHICH ARE KEPT IN THE BOARD OFFICE AND IN CASE THEY ARE NEEDED. WE ALSO USE THESE MACHINES TO TEACH POLLING SPECTATORS AND MACHINE CUSTODIANS. MANY OF THE TOWNS AND THE CITY ALLOW THEIR MACHINES TO BE USED FOR VILLAGE ELECTIONS AND SCHOOL DISTRICT ELECTIONS.

ALL THE VOTING MACHINES IN JEFFERSON COUNTY ARE ACCESSIBLE TO THE DISABLED.

ELECTION NIGHT

EVERYONE LOVES ELECTION NIGHT. EVERYONE'S HARD WORK HAS FINALLY COME TO AN END, WITH THE EXCEPTION OF THE BOARD OF ELECTIONS, THAT IS. IN JEFFERSON COUNTY WE SET UP A LARGE ROOM WITH CANDIDATE BOARDS, TELEPHONES, AND LOTS OF ROOM TO JUST SIT AND WATCH. THE RADIO STATION COMES IN AND SETS UP LIVE RADIO. THE TV CAMERAS ARE THERE INTERVIEWING CANDIDATES AND ELECTION PERSONNEL, REPORTERS ARE TALKING TO PEOPLE AND EVERYONE IS GETTING THE NUMBERS AS THEY COME INTO THE SYSTEM.

BOARD, PARTIES AND INTERESTED PEOPLE. THIS IS INFORMATION FOR THE PUBLIC AND WE HAVE A FUN TIME DOING IT.

NEWS MEDIA

THE BOARD OF ELECTIONS WORKS VERY CLOSELY WITH OUR LOCAL NEWS MEDIA. THE LOCAL TELEVISION STATIONS COME INTO OUR OFFICE SEVERAL TIMES BEFORE THE ELECTIONS TO KEEP PEOPLE REMINDED OF ELECTION DAY. THE LOCAL RADIO STATIONS WORK DILIGENTLY TO KEEP THE VOTERS INFORMED OF THE MANY IMPORTANT DATES PERTAINING TO THE ELECTIONS. OUR NEWSPAPER REPORTERS ARE ALSO WORKING VERY HARD AT KEEPING PEOPLE INFORMED WITH SAMPLE BALLOTS AND ARTICLES ABOUT THE ELECTIONS. WE HAVE ALL WORKED HARD TO KEEP COMMUNICATIONS OPEN AND WE ARE PLEASED WITH THE RESULTS OF OUR HARD WORK.

MARY

AGAIN, 1997 WAS AGAIN A BUSY AND INTERESTING YEAR FOR THE JEFFERSON COUNTY BOARD OF ELECTIONS, WITH OUR LOCAL RACES. LOCAL ELECTIONS ARE OFTEN DESCRIBED AS "OFF YEAR ELECTIONS". WE CANNOT SPEAK FOR OTHER COUNTIES, BUT THE JEFFERSON COUNTY BOARD OF ELECTIONS HAS NOT HAD AN "OFF YEAR" IN A LONG TIME.

97 ANNUAL STATISTICAL INFORMATION REPORT

JEFFERSON

PAGE 1

DATE 1/31/97

FINANCIAL SUMMARY

BUDGET

BUDGET FOR 1997	\$ 185,449
BUDGET INCREASE OR (DECREASE) FROM LAST YEARS BUDGET	\$ 14,898 +
AMOUNT APPROPRIATED FOR 97	
	\$ 108,512
WE HAVE A CONSOLIDATED CONTRACTUAL LINE ITEM OF \$51,000 TO GO WHERE NEEDED	\$
	\$ 51,000
	\$

STAFF SUMMARY

COMMISSIONERS

COMMISSIONER SALARY	\$ 2,500
COMMISSIONER SALARY	\$ 2,500
TERM	2
F TIME	PART

DEPUTY COMMISSIONERS

DEPUTY SALARY	\$ 27,196
DEPUTY SALARY	\$ 27,196
F TIME	FULL

EMPLOYEES (EXCLUDE COMMISSIONERS & DEPUTIES)

FULL TIME BOARD EMPLOYEES	2
PART TIME BOARD EMPLOYEES	2
TEMPORARY OR SEASONAL BOARD EMPLOYEES	20

INSPECTOR INFORMATION SUMMARY

TRAINING AND SALARY

INSPECTORS APPOINTED	350
INSPECTORS ATTENDING CLASS INSPECTORS & ALTERNATES	296
INSPECTORS WHO TOOK EXAM.	296
INSPECTORS WHO FAILED EXAM.	0
ALTERNATE INSPECTORS	
AND TRAINED	241 APPOINTED
CLASSES GIVEN	6
	APP. 50
LENGTH OF CLASS SESSION	2 - 3 HOURS
SALARY RANGE (IF YOU HAVE A COUNTY-WIDE RANGE OR THAT AMOUNT IN BOTH THE LOW AND HIGH BOX)	LOW
	\$ [5.50] \$ []
FOR INSPECTORS ATTENDING TRAINING SESSION	\$ 5.00 PER HOUR
PEOPLE WHO CHECK MAIL REG OR CALLED BECAUSE NO VOTER REGISTRATION CARD ASKING TO BE PUT ON LIST AS INSPECTOR	THIS IS NOT

POLLING SITE SUMMARY

POLLING SITES IN COUNTY	61
POLLING SITES ACCESSIBLE TO HANDICAPPED	61
POLLING DISTRICTS IN COUNTY	61

PETITIONS**DESIGNATING PETITIONS**

RECEIVED	329
CHALLENGED	0
SPECS FILED	0
VALIDATED BY BOARD	0
COURT CASES	0
CASES UPHOLDING BOARD POSITION	0
CASES REVERSING BOARD POSITION	0

INDEPENDENT PETITIONS

RECEIVED	18
CHALLENGED	0
SPECS FILED	0
VALIDATED BY BOARD	0
COURT CASES	0
CASES UPHOLDING BOARD POSITION	0
CASES REVERSING BOARD POSITION	0

CAUCUS CERTIFICATES

RECEIVED	47 CANDIDATES	12
CHALLENGED		0
SPECS FILED		0
VALIDATED BY BOARD		0
COURT CASES		0
CASES UPHOLDING BOARD POSITION		0
CASES REVERSING BOARD POSITION		0

CAMPAIGN FINANCE SUMMARY

FILINGS	260
FIVE DAY LETTERS SENT	1
CURRENT DELINQUENT FILINGS	2
REFERRED TO COUNTY ATTORNEY OR DA	0

REGISTRATION AND ENROLLMENT SUMMARY**CENTRAL REGISTRATION**

CENTRAL REGISTRATION FORMS PROCESSED	126
--------------------------------------	-----

MAIL REGISTRATION

FORMS USED	9475
FORMS ISSUED TO GROUPS	4500
FORMS USED IN YOUR OWN OUTREACH PROGRAMS (OFFICES, TOWN/CITY HALLS, ETC)	4475
FORMS PROCESSED FROM TAX PACKETS	2

REGISTRATION SUMMARY FROM ALL SOURCES

NEW REGISTRANTS PROCESSED IN 1997	- 3007
MOVERS WITHIN YOUR COUNTY PROCESSED IN 1997	4511
NUMBER OF ENROLLMENT CHANGES	414
NUMBER OF NAME CHANGES	12

ABSENTEE AND AFFIDAVIT BALLOT SUMMARY**PRIMARY ABSENTEES**

APPLICATIONS RECEIVED	597
BALLOTS MAILED	597
BALLOTS RETURNED	346

VOTERS WHO VOTED IN PERSON AFTER VOTING ABSENTEE	2
--	---

PRIMARY AFFIDAVITS

AFFIDAVITS RECEIVED	9
AFFIDAVITS COUNTED FOR TRANSFERS/MOVERS	0
AFFIDAVITS COUNTED FOR OTHER REASONS	0

REASONS FOR REJECTION

INVALID AFFIDAVITS REJECTED	9
NOT SIGNED	0
WRONG DISTRICT	0
MAILED OUT INCORRECTLY	0
NOT YET ENROLLED	7
DUPLICATE	2

PRIMARY COURT ORDERS

COURT ORDERS PROCESSED	0
------------------------	---

GENERAL ABSENTEES

APPLICATIONS RECEIVED	1281
BALLOTS MAILED	1278
BALLOTS RETURNED	1084
INVALIDATED (NOT SIGNED, DATED AFTER ELEC, ETC.)	94
VOTERS WHO VOTED IN PERSON AFTER VOTING ABSENTEE	8

GENERAL AFFIDAVITS

AFFIDAVITS RECEIVED	116
AFFIDAVITS COUNTED FOR TRANSFERS/MOVERS	98
AFFIDAVITS COUNTED FOR OTHER REASONS	0

REASONS FOR REJECTION

INVALID AFFIDAVITS REJECTED	18
NOT SIGNED	1
WRONG DISTRICT	5
MAILED OUT INCORRECTLY	0
DUPLICATE	12

GENERAL COURT ORDERS

COURT ORDERS PROCESSED	4
------------------------	---

NURSING HOMES ABSENTEE BALLOT PROGRAM

ABSENTEE BALLOTS IN NURSING HOMES <i>NOT THIS YEAR</i>	YES <input type="checkbox"/>
HOMES VISITED	0
BALLOTS PROCESSED - PRIMARY AND GENERAL TOGETHER	0

GENERAL INFORMATION

DO YOU HAVE A FAX MACHINE IN YOUR OFFICE?	YES <input type="checkbox"/>
ANY VILLAGE ELECTIONS? <i>(3) NOV. 1998</i>	YES <input type="checkbox"/>

se answer the questions below. You may use additional
needed.

POSTAL PROGRAM Report your current method of moni
program supplies at postal sites. What systems are in
to ensure an adequate supply of forms is available a
times.

egin each year by sending a supply of registration forms
tter to each of the post offices in our county. We ask
office to call our office if their supply of forms be
If we don't hear from them within sixty days, we usuall
and ask if they need more forms. We also make it a po
interested registrants that they can pick up a form at
post office. We have found the post offices are more a
forms on hand when it is a convenience for their patron
neral, the majority of the post offices in our county ar
ful.

SCHOOLS PROGRAM Describe any school registration pro
conducted in the past year.

s year nine out of the twelve schools agreed to hav
stration clerks go into their schools and register stud
other three schools preferred doing it themselves.
ntments are made in February for the clerks to go int
ols in March or April. The week before the clerks are to
school, a letter is sent reminding the school what the c
need to set up a registration desk. The schools
cipate are very cooperative. Two of the schools hav
ts go into their classes and explain the importance of v
now they can vote an absentee if they will be going aw
ge or going into the military. The clerks also hand ou
owing literature to the student: "One Vote," "Hav
stered to Vote," "Military Voting," and "Absentee Vot

MEDIA Describe any media program, either paid or service, involving Radio/TV/Print you have conducted. Provide any statistics where possible.

We have very good relationships with our local media. We have several radio stations, one county-wide newspaper, several weekly papers, and several local radio stations. We make it a point to keep each of our offices informed of important dates, candidates, election night feedings, etc. They are very helpful to our office because they continue to provide the latest dates to register, talk about voting an absentee ballot, etc. The general public does a great job informing the public. The TV stations come into our offices and do interviews and take the cameras into our office which shows the public what our office does. This has helped a lot of the TV stations called the day after the election and we had a live coverage for the 6:00 news. This was very helpful as people (candidates) couldn't understand why it took so long to get official results. We were able to show them what we do the first two days (cleaning & sorting) and how we count the absentee ballots (these are counted in-house) and how we make sure the voter did not vote in person before we open them. In the past we have tried to explain this to the candidates but being able to actually see the office and what we do like the evening after elections gave them a better understanding of what we were talking about. We had several phone calls and therefore were able to get the work done at a faster pace.

PRINT RESOURCES Describe how your board utilizes brochures and posters provided by the state board of elections. Provide quantity used where available.

Brochures and posters are used at the high schools, local county fairs, and during Jefferson County Week. We also have a table for voters to pick up when they come into our office.

ON PLAN FOR YEAR 1998

se describe your County Voter Registration Action Plan for
ng year. You should include information relating to
al, School, Media and Print Programs, as well as any
rams you may be considering. It is especially important
a detailed description of your ideas for a school p
uant to the requirements of Law 3-212.4.

action plan for 1998 is to do as much as 1997 and a little
. We will try to utilize any vehicle that will allow
ster more voters. We found last year when we had our
ram for high school inspectors we registered three c
ents that wanted to participate. This year we hope to
program to include another school so again we might re
rested students. We also hope to go into the senior ci
ing and have a registration for their convenience. We
go into nursing homes this year.